

**E-Planning Department  
The Highland Council  
Glenurquhart Road  
Inverness  
IV3 5NX**

**WESTER ROSS AREA SALMON FISHERY BOARD**  
c/o Wester Ross Fisheries Trust Office  
Harbour Centre  
Gairloch  
Ross-shire  
IV21 2BQ  
Tel: 01445 712899 Fax 01445 712899  
E-mail: [admin@wrasfb.org.uk](mailto:admin@wrasfb.org.uk)

22<sup>nd</sup> December 2018

Dear Sir/Madam,

**Response to SSC West Strome new salmon farm application ref 18/04819/FUL**

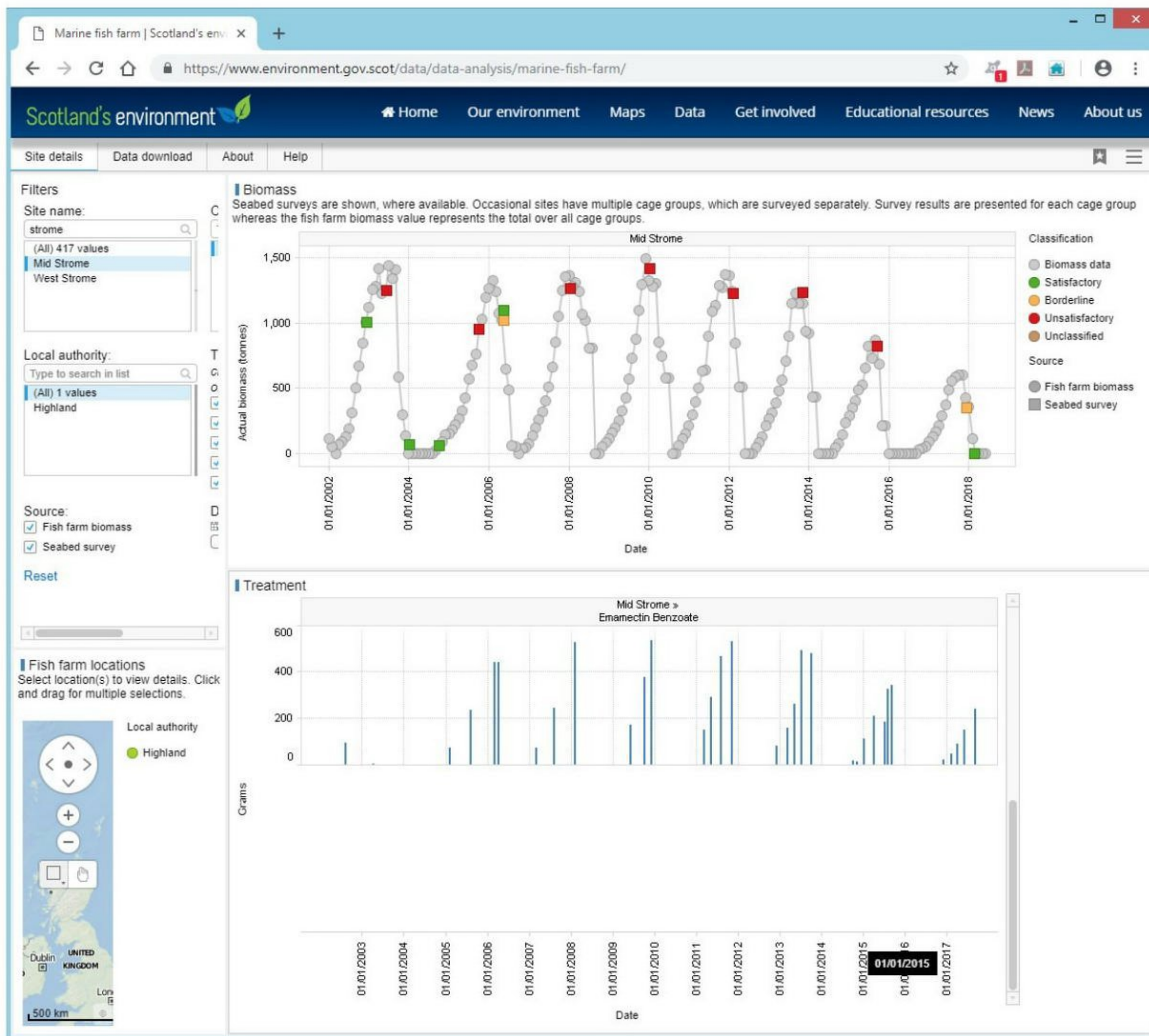
Our concerns regarding the proposed new 2k tonne open cage salmon farm at West Strome in Loch Carron focus on the impact to wild salmon and sea trout populations within the surrounding area. We disagree with the assessment in the Non-Technical summary that 'no significant impacts will result from the proposed development' for the following reasons.

**1. Past record of sea lice control at adjacent salmon farm in relation to rod catches of wild fish in the River Carron**

The proposed farm is to be located next to a smaller existing salmon farm at Mid Strome and control of parasitic sea lice has been problematic at the existing farm. The management of sea lice there has required use of several pesticides including the in-feed 'medicine' Emamectin Benzoate. Figure 1 shows the recorded biomass at this farm over recent production cycles in relation to use of Emamectin Benzoate at the adjacent Mid Strome salmon farm.

Figure 1. Biomass and use of Emamectin benzoate at mid Strome salmon farm.

<https://www.environment.gov.scot/data/data-analysis/marine-fish-farm/>



During the years 2008 to 2012 sea trout were sampled on wild fish at the mouth of the River Carron by the Wester Ross Fisheries Trust sweep netting team. In 2012, sea trout carrying very high numbers of small, early stage chalimus lice were recorded at the mouth of the River Carron (see Appendix 2).

Subsequently SSPO published regional average sea lice figures for salmon farm production areas in Scotland. Average sea lice levels at salmon farms within the Loch Kishorn – Carron area exceeded the SSPO CoGP Treatment thresholds every second year during the period 2013 – 2017 (see Figure 2). In 2018, the SSPO published individual salmon farm lice figures: the figure of 4.76 adult female lice per farmed fish was given for the existing Mid Strome salmon farm for January 2018.

<http://scottishsalmon.co.uk/wp-content/uploads/2018/04/Lice-averages-Jan-2018.pdf>